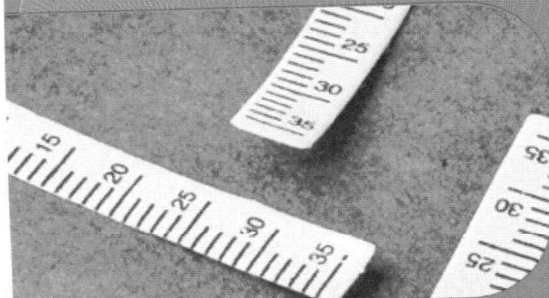


Ophthalmic Diagnostic Strips

Schirmer Strips

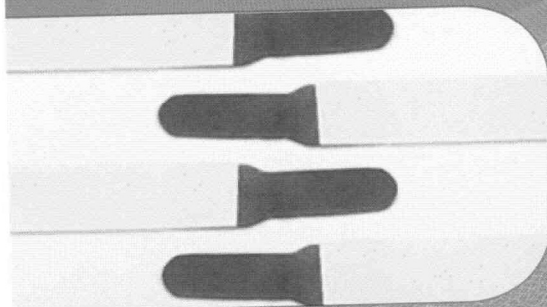
(sterile ophthalmic strips for dry eye test)



Indication

- Used for measurement of tear production for Dry Eye.
- Gauged for easy reading.

Fluorescein Sodium Ophthalmic Strips



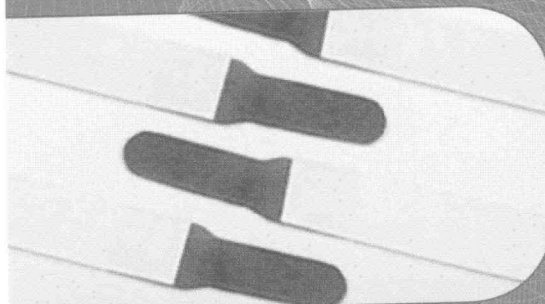
Indication

- For Applanation Tonometry
- For evaluating contact lens fitting

Composition (per strip)

- Fluorescein Sodium IP - 1 mg

High Molecular Fluorescein Sodium Ophthalmic Strips



Indication

- For Applanation Tonometry
- For evaluating contact lens fitting

Composition (per strip)

- Each strip is impregnated with 1.5 mg of high molecular Fluorescein Sodium

www.biotechvisioncare.com

Other Products